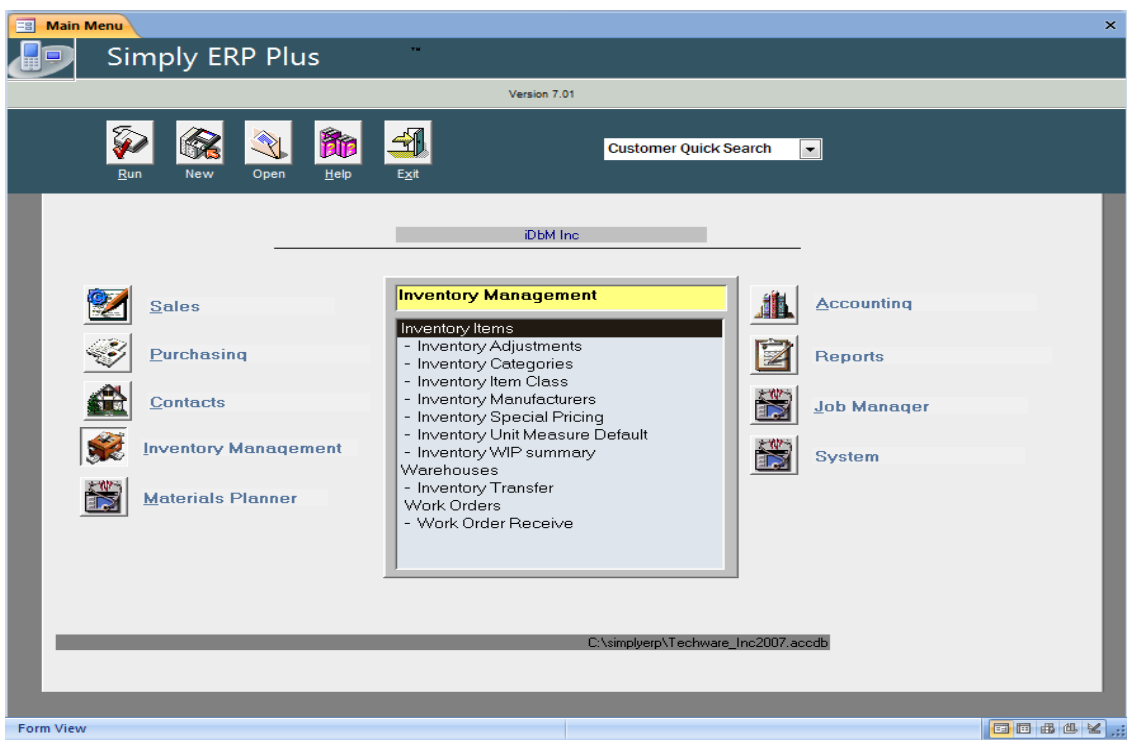




Simply ERP Version 7.01

A simple to use and simple to own inventory management software for small to medium sized businesses. Whether you're a Make to Stock or Make to Order Manufacturer/Distributor you will not find a more affordable ERP Solution in the marketplace. This Microsoft Office 2010™ compatible solution is also customizable to suit your particular manufacturing needs.



Simply ERP is designed to help small to midsize Manufacturing Companies streamline their business processes and improve efficiency. The end result is increased profitability through lower inventory levels, higher inventory turns, faster cash collection, and improved on-time delivery performance. Complete with essential inventory management modules; this system makes your organization more efficient and more effective by improving all your manufacturing/distribution core operations

Sales

- **Quote/Order/Invoice Entry**

- From Quote easily auto convert to Order, to an Invoice, recurring Orders/Invoices can be easily duplicated, customers transaction history all at the click of a button
- Manage your sell price promotions by customer, by volume or by time matrix model
- Serial Number tracking allows you to manage inventory movement and/or validate future RMA transactions
- Real Time visibility of stock levels, allows accurate available to promise data to customers and/or auto initiate necessary Work Order

Purchasing

- **Purchase Order Entry**

- Place your order from a Qualified vendors List that you can easily manage and compare pricing
- Serial Number Recording upon purchase order without invoice upon purchase order
- Serial Number Recording upon purchase order receipt
- Duplicate Purchase Orders at the click of a button on recurring purchase items.
- Procurement Control Reporting Purchase Order History reported by item, by period, by vendor, by value also including PO receiving detail daily and/or receipt totals to date

Contacts

- **Customer Relationship Management**

CRM Tools:

- Customer Contact Manager & History Log
- Call Manager per Prospect/Vendor
- Appointment Calendar with Alerts

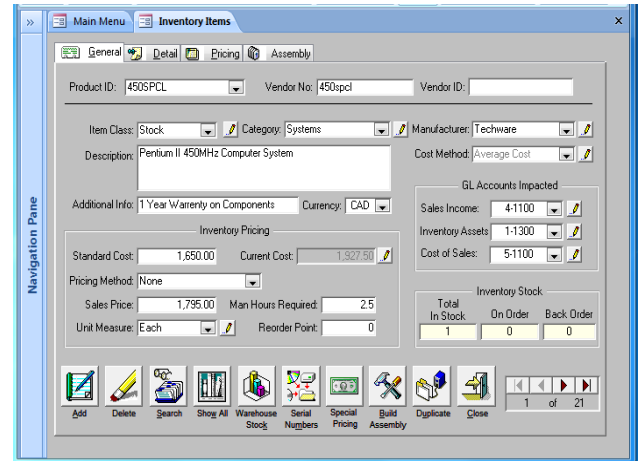
Targeted Customer Reporting :

- Customer Invoices Paid, Open, Totals by period
- Customer Order Totals, by Salesperson, Back Order
- Customer Quotation Totals

Inventory Management

- **Inventory Control**

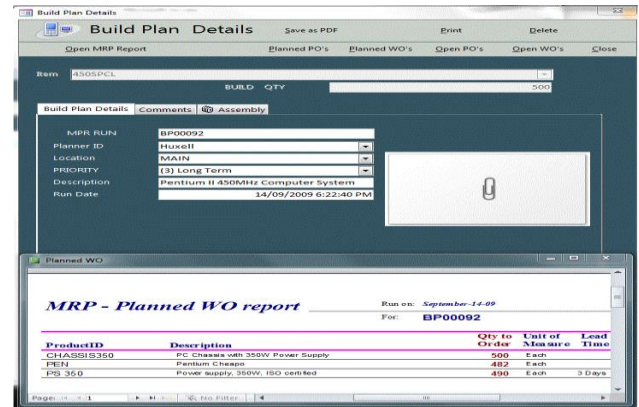
- Master Allows all inventory stock raw materials or finished goods to be identified by current cost, standard cost, qualified vendors, manufacturers description, image display and/or CAD drawing
- Inventory Valuations Reports by item and by location for both finished goods and/or raw materials
- Inventory Transaction Reporting captures complete history of inventory movement through all phases of procurement, manufacturing and shipping
- Bill of Materials can be built to 7 levels of assembly



Material Resource Planning

- **Materials Planner**

- Master Build Planner provides real time calculations of quantity on hand of each inventory item based on current and committed sales orders, current work orders and purchase orders and reports both current and future availability of manufactured/purchased items
- Phantom Build Planner provides a what-if capability to view the impact of a new build order prior to loading into production plan .This real time planner identifies current availability and shortages and their lead times.
- MultiLevel Build Of Materials Capability Build planners provide Unlimited levels of bills of materials for manufactured items detailing inventory status from full assembly, sub assembly through to component levels.
- Minimum/Maximum Levels MRP Reports identifies the minimum/maximum levels of current inventory item
- Perpetual Inventory Management model allows high volume/ high speed data inventory processing
- Aging Items MRP Reports flag slow moving inventory ie. items that have not moved from stores for a selected period typically six months or greater
- MRP Triggered Emails MRP event driven emails may be generated to notify management personnel who need to be notified of the status of ie. low or high inventory levels, current shipments or outstanding purchase orders.
- Ultra FAST MRP Reports may be generated daily typically in minutes not hours. This allows the procurement team to quickly predict planned purchase orders for sales forecasts or future Build Plans



For more information please contact us

iDbM Inc
Internet Databases for Manufacturing

Email: info@simplyerp.com
Phone: 416-678-5531